

DIN 444

Eye screws

- **Black oxide turned steel**, class 5.8 (tensile strength 500 N/mm²).
- Rolled **threading**.

DIN 444 eye screws are used mainly for assembling equipment and connections.

DIN 444

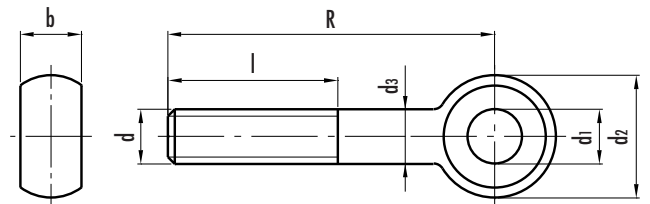
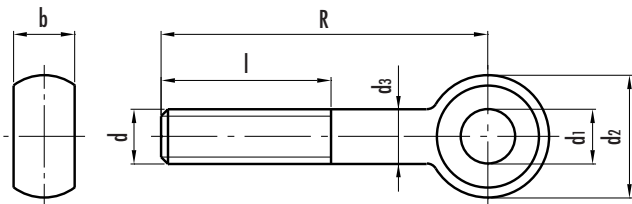
INOX
Stainless
Steel

Eye screws

- **AISI 303** shot-blasted **stainless steel** with matte finish.
- Rolled **threading**.

DIN 444 eye screws are used mainly for assembling equipment and connections.

The high corrosion resistance of AISI 303 stainless steel (see page 672), makes these elements particularly suitable for application on machines and equipment of food processing, chemical and pharmaceutical industry.



Standard elements	Main dimensions						Hole	Weight
Description	d 6g	R	b ^{-0.15}	d2 ^{-0.3}	d3	l	d1 H7	grams
DIN 444-M6-50 DIN 444-M6-75	M6	50 75	7	14	6	32	6	14 20
DIN 444-M8-50 DIN 444-M8-75	M8	50 75	9	18	8	32	8	26 36
DIN 444-M10-50 DIN 444-M10-75 DIN 444-M10-100	M10	50 75 100	12	20	10	40	10	38 52 68
DIN 444-M12-75 DIN 444-M12-100 DIN 444-M12-130	M12	75 100 130	14	25	12	40	12	80 98 120
DIN 444-M16-75 DIN 444-M16-100 DIN 444-M16-130	M16	75 100 130	17	32	16	50	16	146 183 220
DIN 444-M20-100 DIN 444-M20-130 DIN 444-M20-160	M20	100 130 160	22	40	20	63	18	305 366 438

Standard elements	Main dimensions						Hole	Weight
Description	d 6g	R	b ^{-0.15}	d2 ^{-0.3}	d3	l	d1 H7	grams
DIN 444-M6-50-NI DIN 444-M6-75-NI	M6	50 75	7	14	6	32	6	14 20
DIN 444-M8-50-NI DIN 444-M8-75-NI	M8	50 75	9	18	8	32	8	26 36
DIN 444-M10-50-NI DIN 444-M10-75-NI DIN 444-M10-100-NI	M10	50 75 100	12	20	10	40	10	38 52 68
DIN 444-M12-75-NI DIN 444-M12-100-NI DIN 444-M12-130-NI	M12	75 100 130	14	25	12	40	12	80 98 120
DIN 444-M16-75-NI DIN 444-M16-100-NI DIN 444-M16-130-NI	M16	75 100 130	17	32	16	50	16	146 183 220